

 AQUAVISION

the ultimate in luxury,  
waterproof and in-wall televisions





From the originators of the bathroom television, Aquavision introduces the latest in home entertainment. Aquavision Series 4 has been designed to take technology beyond the boundaries of conventional television. Having manufactured bathroom televisions since 1997, Aquavision really is the most knowledgeable and experienced company in the business.



## in the bathroom...

All Aquavision televisions are built to the latest regulations in waterproofing and safety and are designed to integrate into your bathroom or any other room, such as kitchens, swimming pool and garden environments, spas and saunas. They all feature heated screen areas to prevent the front misting up in humid conditions or even freezing-up in cold conditions and come with a master and a floatable, waterproof remote control.

 AQUAVISION

Aquavision is a completely independent television. Our televisions incorporate the latest and best features. Image quality is second-to-none, offering outstanding reproduction of detail and depth of images. The new screens accept both industry standard 'High Definition' video formats (1080i and 720p) perfect for watching the latest high definition media. With its slim and flush profile, your Aquavision unit can easily be fitted into any stud or solid wall and tiled or plastered-up to give that truly 'built in' look anywhere.



in the sitting room...

Our televisions were originally designed for use just in bathrooms, however due to their sleek and sophisticated design, Aquavision is increasingly being installed in other areas of the home such as living rooms and bedrooms. In fact they can be installed anywhere you would want a television. The Series 4 in-wall televisions will complement and blend into any environment – either in the home or in commercial settings such as hotels and corporate offices.



"The ultimate in  
contemporary luxury"

HOMES MAGAZINE

## the range

### 17" - AVF-17-4C

The compact 17" screen has a traditional 4:3 aspect ratio (standard 'square' picture, rather than widescreen), Freeview digital and analogue tuners, a component video, S-Video and analogue PC input, HDMI input, full scart connection, built-in games and RS232 control. The unit has a thickness of 90mm and measures 385 x 470mm.

### 19" - AVF-19-4C

The 19" screen unit has a 16:9 aspect ratio (widescreen, rather than 'square picture'), Freeview digital and analogue tuners, a component video, S-Video and analogue PC input, HDMI input, full scart connection, built-in games and RS232 control. The unit has a thickness of 90mm and measures 371 x 516mm.

### 26" - AVF-26-4C

The 26" screen unit has a 16:9 aspect ratio (widescreen, rather than 'square picture'), Freeview digital and analogue tuners, a component video, S-Video and analogue PC input, HDMI input, full scart connection, built-in games and RS232 control. The unit has a thickness of 115mm and measures 492 x 722mm.

### 32" - AVF-32-4C

The 32" screen unit has a 16:9 aspect ratio (widescreen, rather than 'square picture'), contrast ratio 1600:1, Freeview digital and analogue tuners, a component video, S-Video and analogue PC input, twin HDMI inputs, full scart connection, built-in games and RS232 control. The unit has a thickness of 120mm and measures 571 x 854mm.

### 40" - AVF-40-4C

The 40" screen unit has a 16:9 aspect ratio (widescreen, rather than 'square picture'), Freeview digital and analogue tuners, a component video, S-Video and analogue PC input, twin HDMI inputs, full scart connection, built-in games and RS232 control. The unit has a thickness of 120mm and measures 692 x 1049mm.

The above specifications apply to High End only

### 17" - AVF-17-4C

With polar white glass



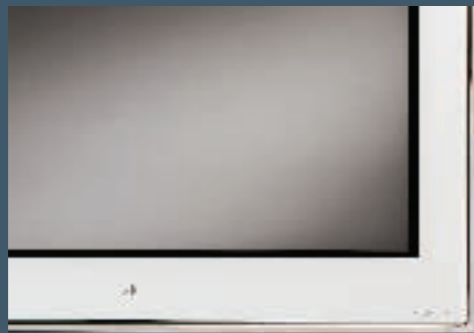
### 26" - AVF-26-4C

With polar white glass



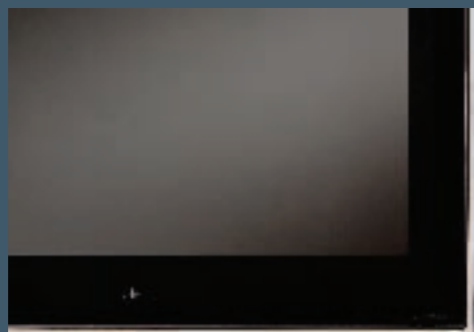


## glass finishes



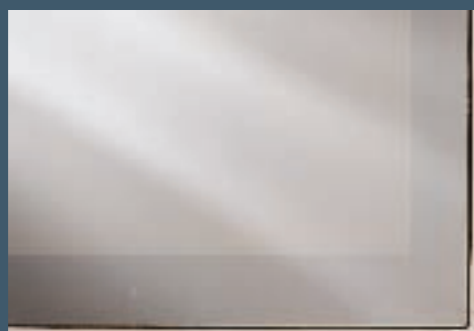
### polar white

Features a special optically clear glass that enhances picture quality and eliminates picture degradation caused by normal 'green' glass. There is a simple black border around the screen to enhance the picture clarity and the Aquavision logo in pale grey. The logo acts as a window indicating the power status LED light and the IR receiver.



### black

Exactly as it says, black ink baked onto the glass during toughening, but as with the above, we have applied this to special optically clear glass to ensure that the black stays black. The pale grey Aquavision logo acts as a window indicating the power status LED light and the IR receiver.



### mirrorvision

When the TV is off, the glass takes the form of a mirror that is suitable for shaving, make-up etc. When the Aquavision is turned on, the mirror gives way to the television screen - a fantastic feature for bathrooms and bedrooms or even to go over the fire place in the living room. The pale grey Aquavision logo acts as a window indicating the power status LED light and the IR receiver.

### Remote Switch Panel

This is the solution for those of you who do not want the hassle of searching for the remote control and for hotels who frequently have to replace them. This is a simple switch panel that gives direct access to the most commonly used features such as power, volume, program etc but does not give access to the all important "set up" menus. This panel also incorporates "switch mimic" controls for integration into other equipment.



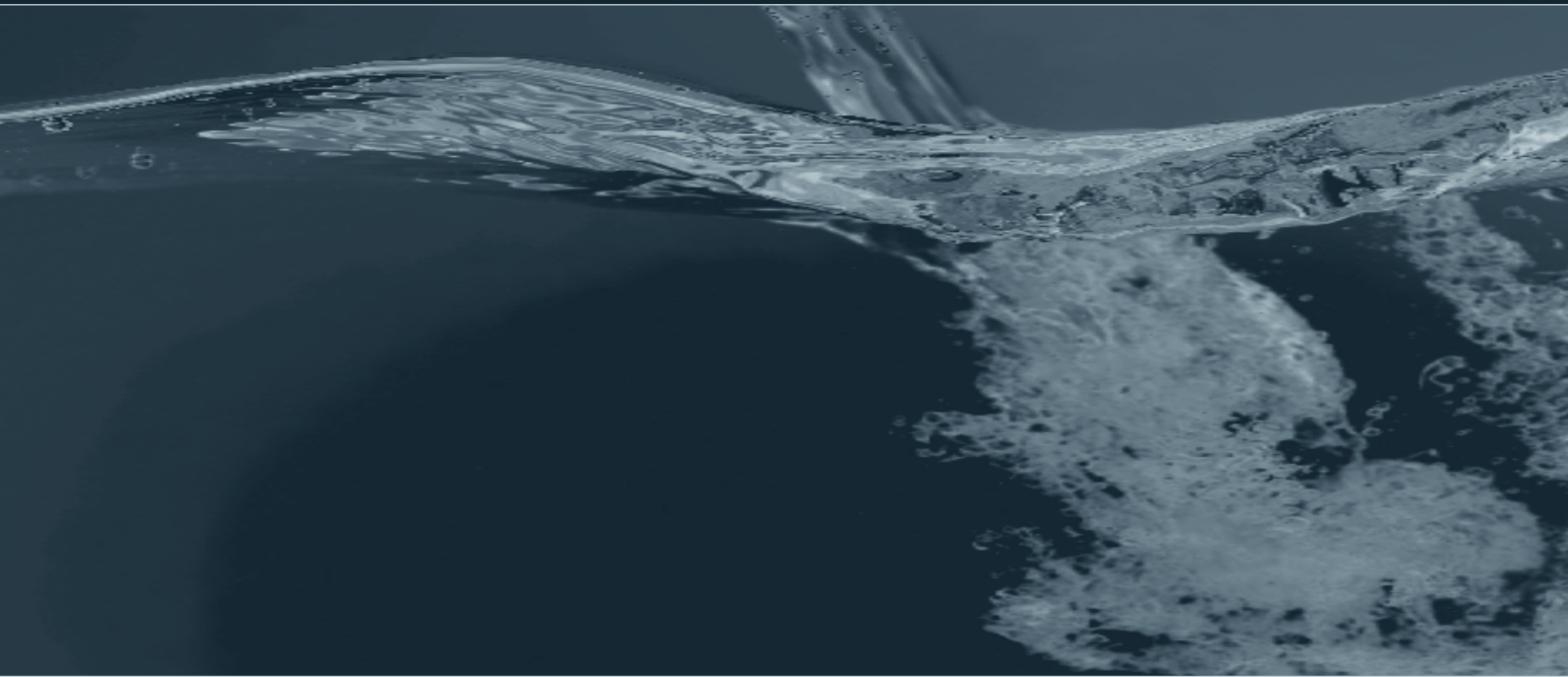
### RS232 Control

The RS232 control port allows the television to be controlled from a compatible touch panel anywhere in the house. These complete home entertainment units feature integrated Freeview digital and analogue tuners, HDMI inputs and even built-in games.

### Speakers

Two discreet in-wall / in-ceiling speakers are available as an optional extra.





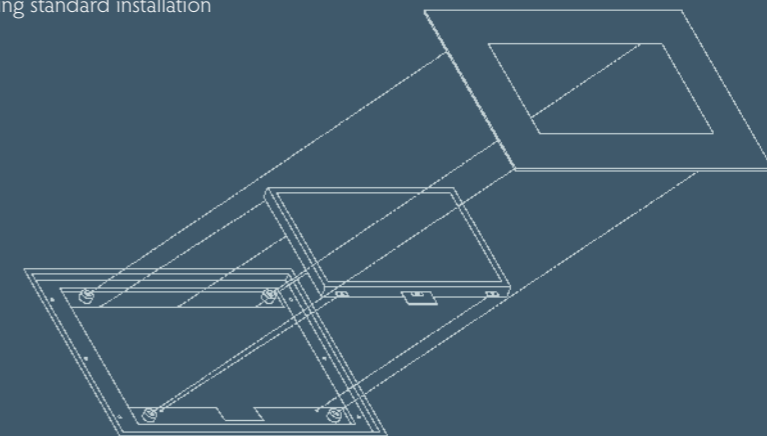
## specifications

	AVF-17-4	AVF-19-4	AVF-26-4	AVF-32-4	AVF-40-4
Screen Size	17"	19"	26"	31.5"	40"
Bezel size	385 x 470	371 x 516	492 x 722	571 x 854	692 x 1049
Cut-Out Size	376 x 461	362 x 507	483 x 713	562 x 845	683 x 1040
Depth	90	90	115	120	120
Active Area	338 x 270	408 x 255	576 x 324	698 x 392	885 x 498
Aspect Ratio	4:3	16:9	16:9	16:9	16:9
Viewing Angle, Up/Down	89° x 89°	80° x 80°	88° x 88°	89° x 89°	89° x 89°
Viewing Angle, Left/Right	89° x 89°	80° x 80°	88° x 88°	89° x 89°	89° x 89°
Brightness	250 Cd/m2	300 Cd/m2	500 Cd/m2	500 Cd/m2	500 Cd/m2
Contrast	700:1	1000:1	600:1	1600:1	1200:1
Back Light Life >50%	25,000 Hours	50,000 Hours	50,000 Hours	50,000 Hours	50,000 Hours
Display Colours	8 Bit, 16.7 Million	8 Bit, 16.7 Million	8 Bit, 16.7 Million	8 Bit, 16.7 Million	8 Bit, 16.7 Million
Number Of Pixels	1280 x 1024	1440 x 900	1366 x 768	1366 x 768	1366 x 768
Analogue Tuner	√	√	√	√	√
Digital Tuner	√	√	√	√	√
Full Scart (R,G,B)	√	√	√	√	√
Half Scart				√	√
S-Video	√	√	√	√	√
Analogue PC	√	√	√	√	√
Composite Video	√	√	√	√	√
Component Video	√	√	√	√	√
HDMI High Definition Multimedia Interface	1	1	1	2	2
Sky Through Infra-Red	√	√	√	√	√
RS232 Control	√	√	√	√	√
Hard Wired Switch Panel	Optional	Optional	Optional	Optional	Optional
Built-in Games	√	√	√	√	√

The above specifications apply to High End only

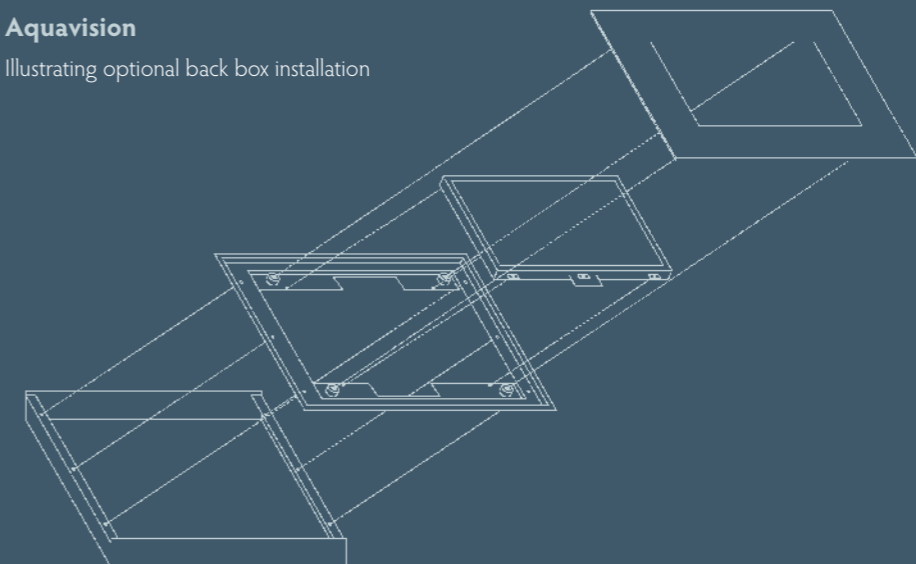
### Aquavision

Illustrating standard installation



### Aquavision

Illustrating optional back box installation





[www.aquavision.co.uk](http://www.aquavision.co.uk)

Tel: +44 (0)1992 708333

Fax: +44 (0)1992 708317

Email: [info@aquavision.co.uk](mailto:info@aquavision.co.uk)

AQUAVISION® - Aquavision is a registered trademark

